

City of Moab Official Zoning Map

APPROVED
PROVAL

Approved by action of the Moab City Council on the 14th day of February, 2012,
as Ordinance 2012-03.

By: David Sakrisen, Mayor
By: Rachel Ellison, City Recorder

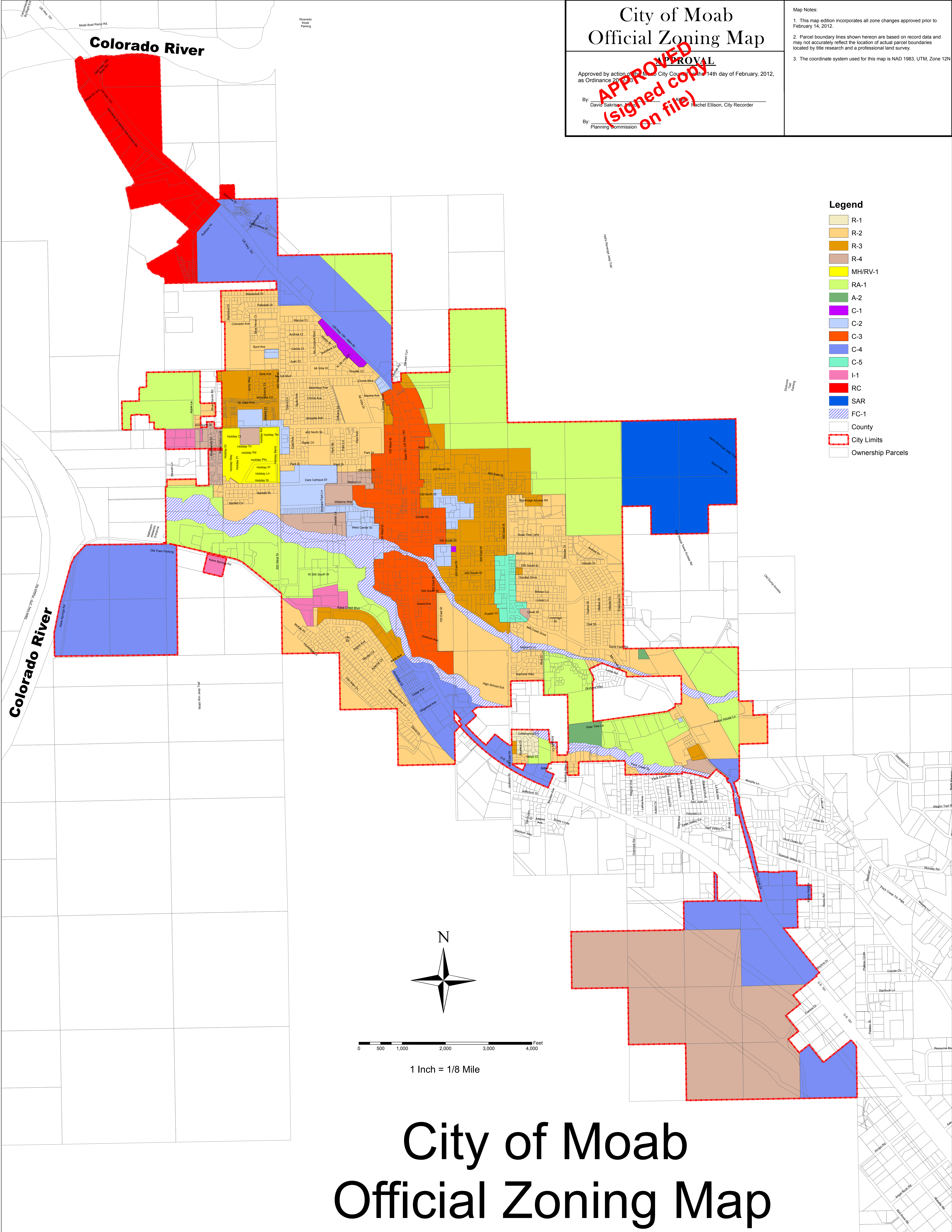
By: Planning Commission

Map Notes:

1. This map edition incorporates all zone changes approved prior to February 14, 2012.
2. Parcel boundary lines shown hereon are based on record data and may not accurately reflect the location of actual parcel boundaries located by title research and a professional land survey.
3. The coordinate system used for this map is NAD 1983, UTM, Zone 12N

Legend

- R-1
- R-2
- R-3
- R-4
- MH/RV-1
- RA-1
- A-2
- C-1
- C-2
- C-3
- C-4
- C-5
- I-1
- RC
- SAR
- FC-1
- County
- City Limits
- Ownership Parcels



City of Moab Official Zoning Map