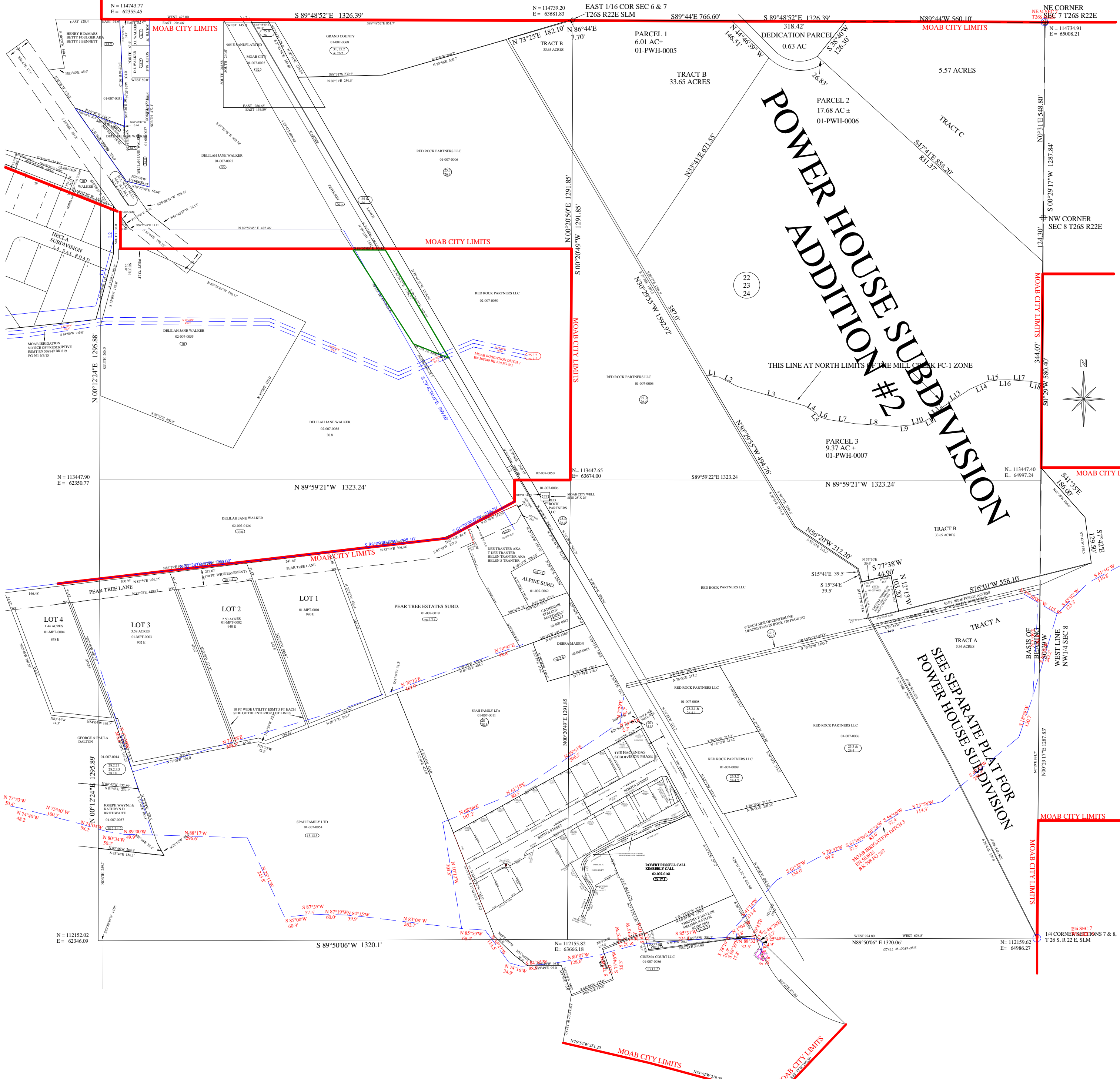


# NE1/4 SECTION 7 T26S R22E

SCALE 1" = 200'



**POWER HOUSE ADDITION #2**

**SEE SEPARATE PLAT FOR POWER HOUSE SUBDIVISION**

MOAB CITY LIMITS

MOAB CITY LIMITS

MOAB CITY LIMITS

MOAB CITY LIMITS

MOAB CITY LIMITS

MOAB CITY LIMITS

MOAB CITY LIMITS

MOAB CITY LIMITS

SILVERTON BLVD

N = 114743.77  
E = 62355.45

N = 114739.20  
E = 63681.83

NE CORNER  
SEC 7 T26S R22E  
N = 114734.91  
E = 65008.21

NW CORNER  
SEC 8 T26S R22E

N = 113447.40  
E = 64997.24

E1/4 SEC 7  
T 26 S, R 22 E, SLM  
N = 112159.62  
E = 64986.27

N = 113447.90  
E = 62350.77

N = 112152.02  
E = 62346.09

N = 112155.82  
E = 63666.18

N89°50'06" E 1320.06'

S 89°50'06" W 1320.1'

EAST 1/16 COR SEC 6 & 7  
T26S R22E SLM  
S89°44'E 766.60'

S 89°48'52" E 1326.39'

N89°44'W 560.10'

S 89°48'52" E 1326.39'

N 73°25' E 182.10'

N 86°44' E 7.70'

S 89°48'52" E 1326.39'

N 00°12'24" E 1295.88'

N 89°59'21" W 1323.24'

S89°59'22" E 1323.24'

N 89°59'21" W 1323.24'

N 00°12'24" E 1295.89'

N 00°20'49" E 1291.85'

N 00°20'49" W 1592.92'

N56°20'W 212.20'

N 12°13'W 129.30'

S 15°34' E 39.5'

S 15°41' E 39.5'

S 77°38' W 44.90'

N 12°13'W 129.30'

S 76°01'W 558.10'

S 76°01'W 558.10'

S 76°01'W 558.10'

S 76°01'W 558.10'

S 76°01'W 558.10'

S 76°01'W 558.10'

S 76°01'W 558.10'

S 76°01'W 558.10'

S 76°01'W 558.10'

S 76°01'W 558.10'

S 76°01'W 558.10'

S 76°01'W 558.10'

S 76°01'W 558.10'

S 76°01'W 558.10'

S 76°01'W 558.10'

S 76°01'W 558.10'

S 76°01'W 558.10'

S 76°01'W 558.10'

S 76°01'W 558.10'

S 76°01'W 558.10'

S 76°01'W 558.10'

S 76°01'W 558.10'

S 76°01'W 558.10'

S 76°01'W 558.10'

S 76°01'W 558.10'

S 76°01'W 558.10'

S 76°01'W 558.10'

S 76°01'W 558.10'

S 76°01'W 558.10'

S 76°01'W 558.10'

S 76°01'W 558.10'

S 76°01'W 558.10'

S 76°01'W 558.10'

S 76°01'W 558.10'

S 76°01'W 558.10'

S 76°01'W 558.10'

S 76°01'W 558.10'