



OCTOBER 8, 2020
PLANNING COMMISSION
SPECIAL MEETING 6:00 P.M.

1. Resort Commercial Zone - Overnight Accommodation Development Standard Site Visit

Site visit meeting at Moab Springs Ranch 1266 N Hwy 191, Moab UT 84532. Parking designated for Planning Commissioners and Staff on site by Moab Springs Ranch Management.

Documents:

[RC ZONE SITE VISIT. OA DEV STANDARD DISCUSSION PC AGENDA SUMMARY 100820.PDF](#)
[EXHIBIT 1 RC OA PARCEL MAP.PDF](#)

Moab Planning Commission Agenda Item

Resort Commercial Zone Site Visit – OA Development Standard Discussion

Meeting Date: October 8, 2020

Title: Resort Commercial Zone Site Visit and Discussion on Overnight Accommodation Development Standards

Disposition: Discussion

Staff Presenter: Cory P. Shurtleff, Assistant Planner

Attachment(s):

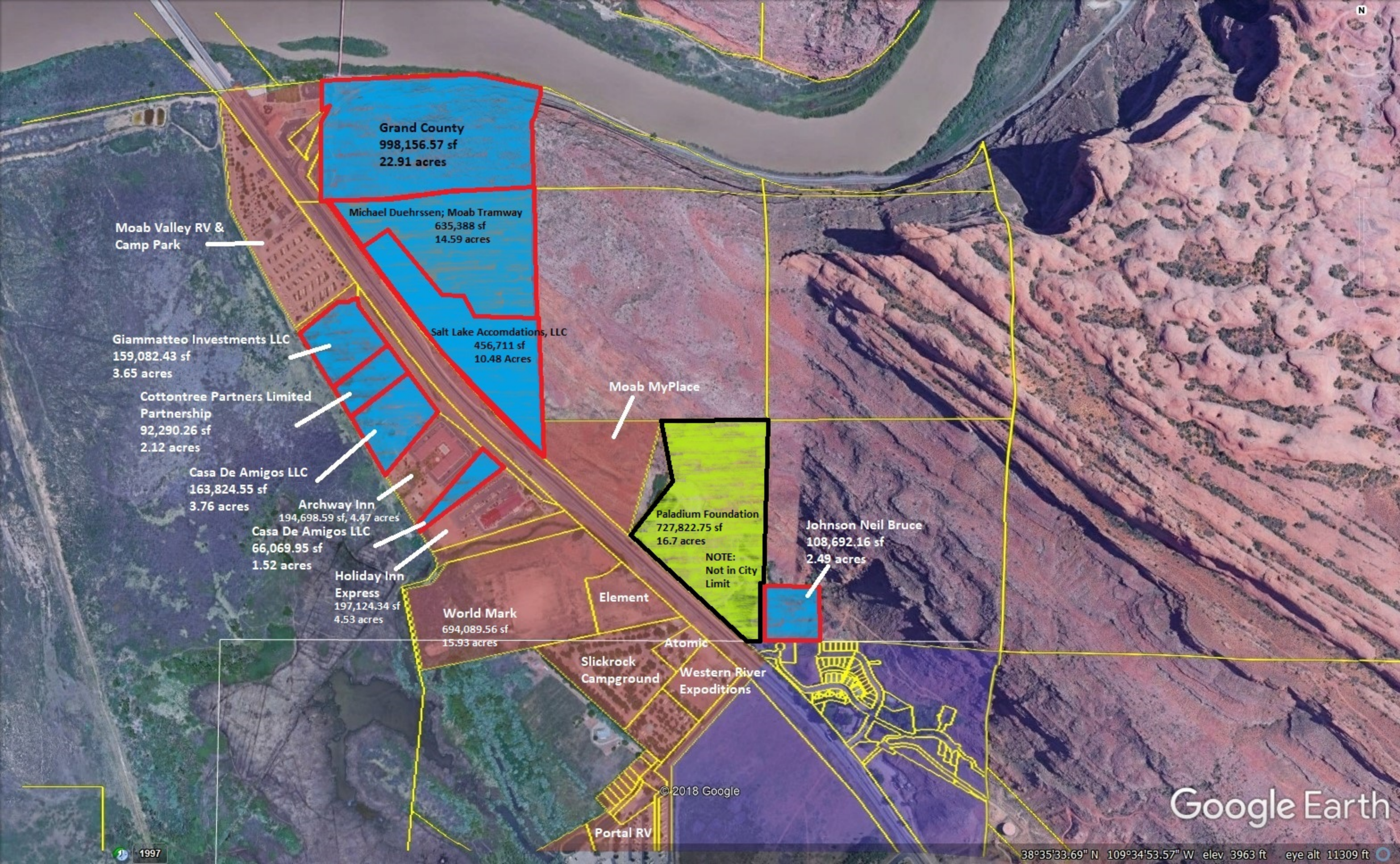
- Exhibit 1: RC OA Parcel Map

Background:

Following discussions at previous Planning Commission Meetings regarding the Resort Commercial Zone – Overnight Accommodation Development Standards, the Planning Commission has requested a site visit to evaluate the current OA developments and vacant parcels in respect to viewshed from the public right-of-way.

Narrative Summary:

The discussion would seek to explore appropriate development standards that would affectively protect public viewshed in the context of the proposed draft ordinance to allow overnight accommodations in the Resort Commercial Zone.



Grand County
998,156.57 sf
22.91 acres

Michael Duehrssen; Moab Tramway
635,388 sf
14.59 acres

Salt Lake Accomodations, LLC
456,711 sf
10.48 Acres

Moab MyPlace

Paladium Foundation
727,822.75 sf
16.7 acres

NOTE:
Not in City
Limit

Johnson Neil Bruce
108,692.16 sf
2.49 acres

Element

World Mark
694,089.56 sf
15.93 acres

Atomic

Slickrock
Campground

Western River
Expeditions

Portal RV

Moab Valley RV &
Camp Park

Giammatteo Investments LLC
159,082.43 sf
3.65 acres

Cottontree Partners Limited
Partnership
92,290.26 sf
2.12 acres

Casa De Amigos LLC
163,824.55 sf
3.76 acres

Archway Inn
194,698.59 sf, 4.47 acres

Casa De Amigos LLC
66,069.95 sf
1.52 acres

Holiday Inn
Express
197,124.34 sf
4.53 acres

© 2018 Google

Google Earth

1997

38°35'33.69" N 109°34'53.57" W elev 3963 ft eye alt 11309 ft